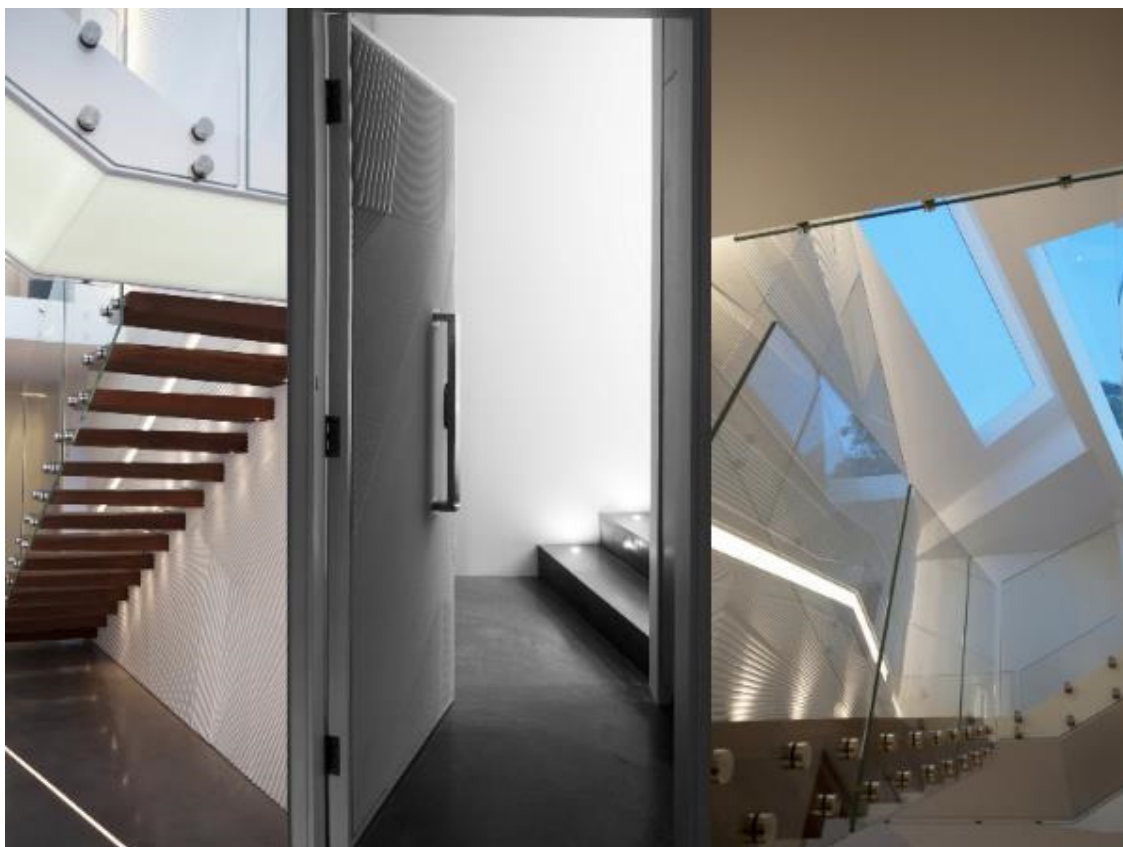
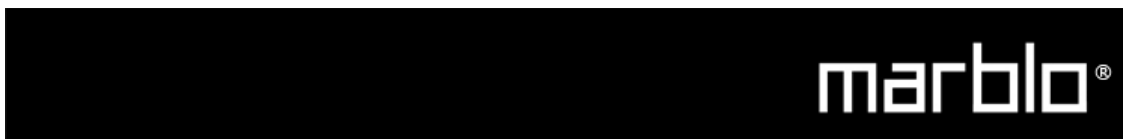


[Subscribe](#)[Share ▼](#)[Past Issues](#)[Tr](#)

MARBLO OCTOBER 2013 - eNEWS

[View this email in your browser](#)

## Naremburn House

**Designer - Bijl Architecture**

Melonie Bayl-Smith and Vanessa Tang-Lee from Bijl Architecture recently completed the Naremburn House, a new single residence on Sydney's Lower North Shore built by Stuart Wilson Constructions.

"A key feature of the Naremburn House is a substantial double height CNC routed wall panel installation designed in collaboration with AR-MA and accompanied by a custom cantilevered stair. Whilst wishing to retain the uniqueness of the wall, the clients wanted to create a special detail in the house that referenced the panel design but was their own 'secret' panel, located within the house but where visitors would rarely if ever venture. Hence, we decided to use Marblo® to create a special internal entry door panel, employing the same CNC routed pattern as the wall," says Melonie Bayl-Smith, Architect and Director of Bijl Architecture.

Fabricated by AR-MA, a single panel of Marblo® in 'Iceberg' colour was utilised to form the facing for the

special entry door, its translucency and subtlety perfectly suiting the small internal space to which the door affords entry.

The scale of the door is similar to the stair wall panels, creating an appropriate reference to the solid forms of the wall installation and a beautiful result that will resonate with the clients for years to come.

[www.bijlarchitecture.com.au](http://www.bijlarchitecture.com.au)



## Introducing the new Mojo Rectangle Bathubs

**Marblo® Mojo Collection**

**Designer - Jo Irwin**

The Mojo Collection of wash basin, created by renowned Australian designer Jo Irwin, utilises simple shapes and elegant lines to form an almost sculptural range of wash basins and free standing bathtubs to suite any bathroom modern, contemporary or classic.

Jo comments below on the vision and the choice of Marblo®.

### ***What was your vision behind the Mojo series?***

To design an elegant, almost sculptural range of basins that would stand the test of time, and yet be functional in day-to-day use.

### ***What limitation or freedom did designing in Marblo® bring to you?***

By using Marblo®, it enabled me to work closely on the detail that was integral to the overall design; elegant fine edges complimented by a smooth, silky finish.

### ***What do you see next for the Mojo Series?***

The new series will be a progression of the first series – yet more versatile in its application, form and

function.

#### **About Jo**

My design philosophy is to 'please' both the client yet the 'eye', when achieved it gives a great sense of satisfaction. It's about form and function, striving to achieve that balance between cutting edge and timelessness. Jo Irwin is an Australian based interior design who has worked on projects across Australia, New Zealand, United Kingdom and Gibraltar.

We are please to announce the arrival of our new designs of Mojo Rectangle 1500 & 1800 bathubs.

To explore Marblo® Bathware and to view our new Mojo Rectangle 1500 & 1800 freestanding bathtubs please visit **[www.marblobathware.com](http://www.marblobathware.com)**

© 2013 Marblo Group Pty Ltd, All Rights Reserved.

Marblo Group Pty Ltd  
Unit 5, 13 Boundary Road  
Marblo Business Centre  
Northmead, NSW 2152  
Australia

[www.marblo.com](http://www.marblo.com)  
<http://www.marblobathware.com/>