

A bright, airy and contemporary extension offers a clear connection to the refurbished courtyards.



The kitchen, with generous dining table, leads out to two leafy courtyards, accessed via aluminium and glass bi-fold doors, which flood the space with air and light, as do highlight windows.

## Period-style perfection

A heritage home revamp gives a nod to times gone by

Heritage homes, like people, need some TLC from time to time. This Sydney house needed just that; it was largely unmodernised with only some basic modifications and additions made about 30 years earlier.

The terrace house was also in need of maintenance and refurbishment. A number of the original features were in good condition but parts of the house were decrepit, such as the rotting upstairs ceiling.

A wander about the neighbourhood, which features many homes of a similar vintage,

showed just what could be done. Seeing their home's potential, the owners wanted to convert the dark, gloomy interior into a warm, light space with a mix of contemporary and traditional styling. A number of the main living areas were poky and impractical and it was important to open up these spaces and connect the inside and outside spaces.

"The heritage status of the house was a major factor in the design of the renovations. It was important to retain a number of the heritage features, both inside and out, including internal features such as the arch in the hallway and the fireplaces to maintain the

The front half of the dwelling was retained and refurbished to maintain the heritage flavour.





Main living areas were opened up and allow a connection to outside spaces.



BEFORE

period character," said architect Melonie Bayl-Smith of Liquid Architecture.

While the front half of the dwelling was retained and refurbished to maintain the heritage flavour of the interior, the rear was demolished to create a bright, airy and contemporary extension with a clear connection to the refurbished back and side courtyards.

The owners wanted to incorporate a large dining table into their kitchen area and create a social kitchen space for family gatherings.



Add bold splashes of colour in the kitchen with splashbacks.

The kitchen is now a social space for family gatherings.



BEFORE

Their pokey kitchen was modernised to incorporate bold splashes of colour (in the form of a brilliant red splashback) and an open-plan meals area. This leads out to two leafy courtyards, accessed via aluminium and glass bi-fold doors, which flood the space with air and light, as do highlight windows.

"The seamless connection of the kitchen, dining and courtyards allows you to feel like you are living in the gardens and courtyard," Melonie said. "The kitchen is a lively space that is the heart of the house. I also love the cosy

yet highly functional study nook which has great direct sunlight in the mornings."

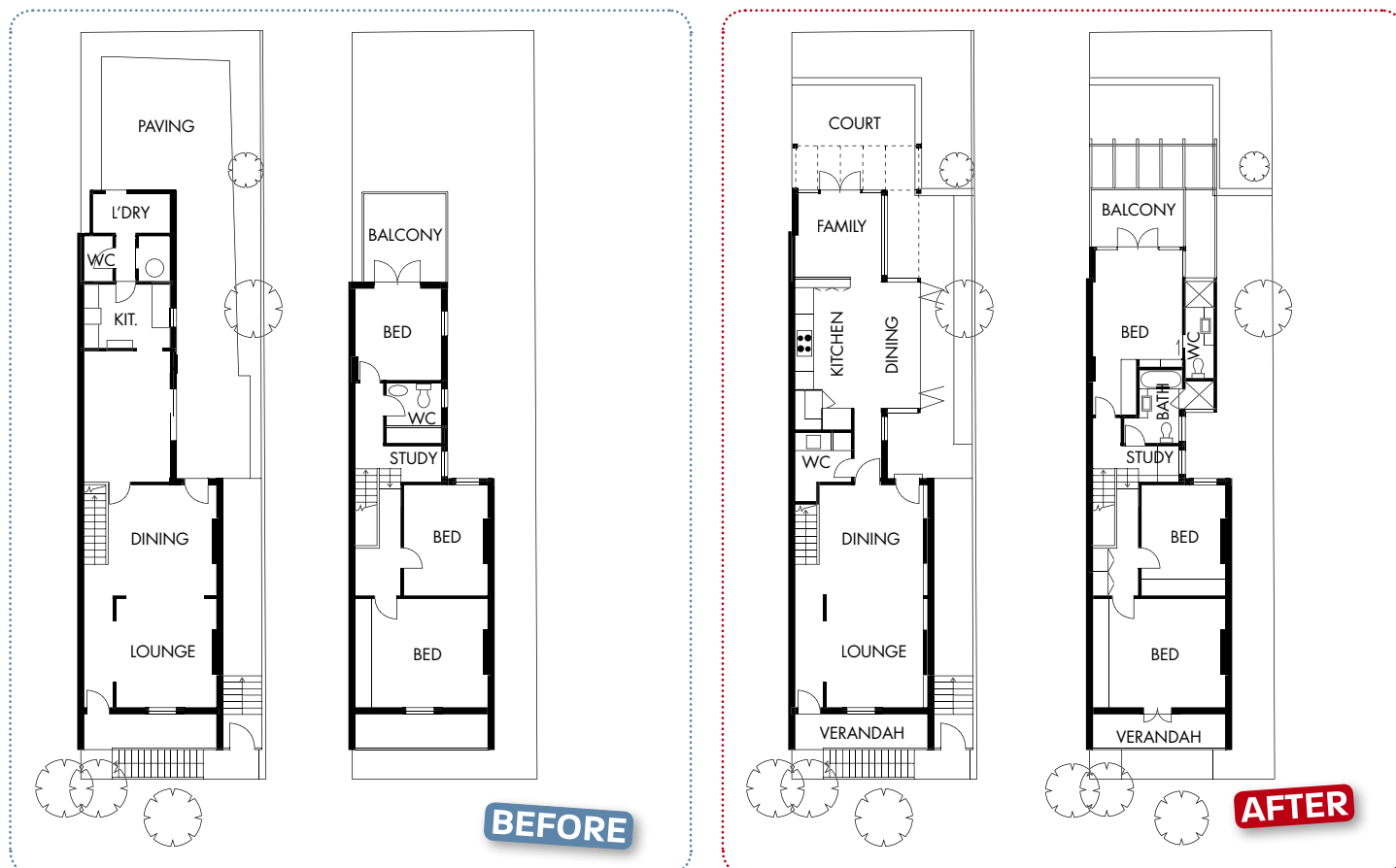
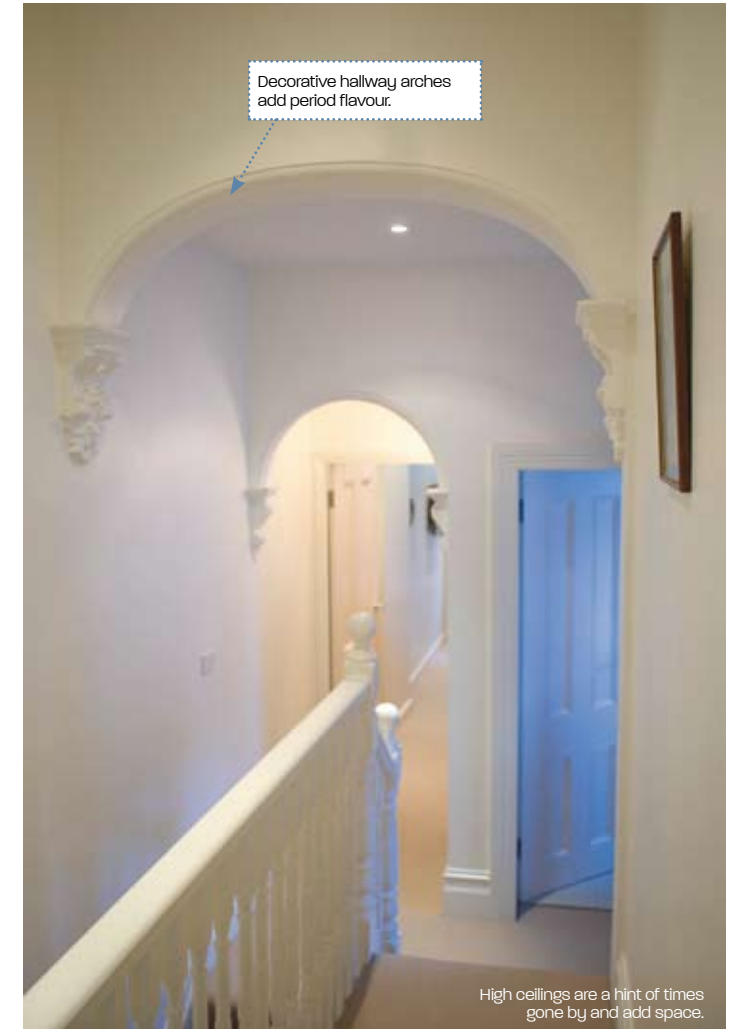
Upstairs, the master bedroom suite was relocated to the rear, extending into the small side addition to incorporate an ensuite bathroom.

"My inspiration for the design was the 5-6m-high sheer rock face that forms the rear boundary of the property. It provided something to respond to, as well as the two-storey form of the original terrace. The Terracade is a contemporary response to the

**"The seamless connection of the kitchen, dining and courtyards allows you to feel like you are living in the gardens and courtyard... The kitchen is a lively space that is the heart of the house"**

face brickwork of the heritage dwellings in the area," said Melonie.

"Because of the constraints of the narrow site, the floorplan had to work very hard to do everything it needed to do. I think this created a disciplined design approach that has resulted in a highly refined addition and internal plan layout. Materials are warm, textured and yet still allow the dwelling to retain a contemporary edge. The design works beautifully and the clients love it," she stated.



“Because of the constraints of the narrow site, the floorplan had to work very hard to do everything it needed to do.”

### Project particulars

**This project was designed by:**  
 LIQUID ARCHITECTURE  
 7/100 Peshurst Street, Willoughby NSW 2068  
**Tel:** 02 9958 7950  
**Email:** mbs@liquidarchitecture.com.au  
**Website:** www.liquidarchitecture.com.au  
**Photography:** Willem Rethmeier  
**This project was built by:**  
 STUART WILSON CONSTRUCTIONS  
**Mobile:** 0412 559 777  
**Licence number:** 55629C  
**Flooring**  
 Kitchen/dining: Tiles  
 Living/stair: Woven carpet  
 Bedrooms: Carpet  
 Outdoor: Pavers from Eco-Concepts  
 Other: Tiles to wet areas

**Walls**  
 External walls: Austral Terracade TL in Torrens  
 New brickwork was built from recycled bricks from the demolition and alterations  
 Existing brickwork repaired and repointed  
 Kitchen/casual dining/stair: Dulux Fair Bianca half strength  
 Kitchen: Decoglaze splashback  
 Dining: Glass bi-fold doors  
 Living: Dulux Fair Bianca  
 Bedroom: Dulux Natural White double strength  
 Other: Timberwork — Dulux White Watsonia  
**Kitchen**  
 Benchtop: CaesarStone Mangrove  
 Splashback: Decoglaze glass splashback  
 Cabinetry: Hog Bristle  
 Other: Kleenmaid appliances  
**Sanitary fixtures + bathroom fittings**  
 Parisi basins  
 Villeroy and Boch Subway WCs

**Lighting**  
 External lights, pendant lights and track lighting from Light Up Willoughby  
**Windows + external doors**  
 Timber-framed windows for original portion of the dwelling  
 Anodised aluminium semi-commercial framed bi-folding and French doors and louvred windows/toplights  
 Original solid timber front door was reglazed and refurbished, including new door handle by Chant NZ  
 Door handles from Stylefinish  
**Outdoor**  
 Soft landscaping designed and undertaken by the builder  
 Slatted screens and fences designed in conjunction with the builder using different-sized timbers  
 Pavers from Eco-Concepts (paver now discontinued)